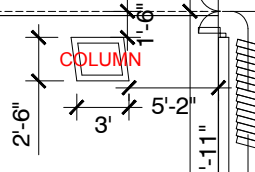
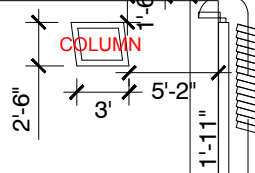
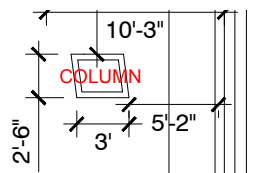


Single Door Dimensions:
3'-1" wide x 7'-3" high.

Single Door Dimensions:
3'-1" wide x 7'-3" high.

Single Door Dimensions:
3'-1" wide x 7'-3" high.



Double Door Dimensions:
typically 5'-3" wide x 7'-3" high.
Please confirm your exhibit components
and product are within these dimensions
and the door widths can accommodate
your materials.

Building Sign: Available for Branding
= 10' From the Floor to the Bottom of the Sign

Lobby CEILING HEIGHT: 16'-8"
LOW CEILING HEIGHT: 10'-9"

Entrance Units in the Finger Lobbies:
Entrance units are allowed in the lobby.
The soffits in the entrances are 10'10" from
the floor. The Anaheim Fire Marshal
requires an 18" space from the top of the
exhibit structure to the bottom of the soffit
to allow for the proper disbursement ratio
from the fire sprinklers. Entrances may not
extend into the finger lobby past the wall of
the facility. Each Meeting Room has a
permanent room identification sign that
must be considered in entrance unit
construction.

Building Sign: Available for Branding
= 10' From the Floor to the Bottom of the Sign

Single Door Dimensions:
3'-1" wide x 7'-3" high.

STORAGE

Level 2 Meeting Room 210C

Disclaimer: Every effort has been made to ensure the accuracy of all information contained on this floor plan. However, no warranties, either expressed or implied, are made with respect to this floor plan. If the location of building columns, utilities or architectural components of the facility is a consideration in the construction or usage of an exhibit, it is the sole responsibility of the exhibitor to physically inspect the facility to verify all dimensions and locations.

FS = Fire Strobes are located at 6'6" from the floor unless noted otherwise (4"x8") - DO NOT BLOCK
 ES = Exit Signs are located at 9'7" from the floor unless noted otherwise - DO NOT BLOCK
 FE = Fire Extinguisher Cabinet - DO NOT BLOCK
 FH = Fire Hose Cabinet - DO NOT BLOCK